 Product Data Sheet	Address: 3th FL, E BLDG, Sogood Science Park, Hangkong Road, Xixiang, Bao'an, Shenzhen, China 518102, Phone/Fax: +086-0755-29921615 Email: info@huaptec.com Website: www.huaptec.com
	Product Model No

Overview

S18T-DW dual band repeater is designed to improve 1800MHz and 2100MHz mobile signals network coverage, which can supply you a good communication experience with clearer call and higher speed data download than ever. Linear amplifier and filtering effectively amplify specific carriers and ensure excellent out of band rejection.

Key Features

- MGC and AGC function
- Independent uplink and downlink gain control
- Designed for indoor installation
- Self-oscillation Protection
- High integration
- Small compact and light weight
- Good heat dissipation for longevity
- Lower power consumption
- Flexible power supply: 110~240VAC



Only for reference


RF Parameters

	Bands	Uplink		Downlink	
Frequency Range	LTE 1800band WCDMA 2100band	1730MHz 1935MHz	1750MHz 1950MHz	1825MHz 2125MHz	1845MHz 2140MHz
Gain			70dB 18dBm		70dB 18dBm
Maximum Output Power					
MGC (Step Attenuation)				≥ 31 dB / 1 dB step	
Automatic Gain Control				≥ 31 dB	
Pass Band Ripple				p-p. ≤ 3.0dB	
Noise Figure				≤ 8 dB	
VSWR				≤ 2.0	
Group Delay				≤ 6 μs	
Frequency Error				≤ 0.05 ppm	
	1800 Band 2100 Band			≤ 8%	
				≤ 12.5%	
MTBF (Mean time between failures)				≥ 50000 hours	
Maximum Input Power		≤ -10dBm		≤ -10dBm	

Electrical Parameters

Impedance	50 ohm
Power Supply	Input 110-240VAC ±20% , 50±10% Hz, Output DC 12 V / 7 A
Power Consumption	≤ 30W

Huaptec Telecom GmbH Phone: (44)20 3239 5808 Address: Benno-Strauß-Street 7, 90763 Fürth, Germany Email: sales@huaptec.eu	Huaptec US Inc. Phone: (972) 870-5666 Address: 6210 N Belt Line Rd., Ste. 110, Irving, TX 75063 Email: info@huaptec.us	Huaptec Telecom India Private Limited Address: No 57/2, Ground Floor, 8th Main, 2nd Stage J.C. Industrial Estate, Yelachenahalli, Kanakapura Main Road Bengaluru, Phone: +91-80-45973000 & 40573000, Email: info@huaptec.in
--	---	--

 Product Data Sheet	Address: 3th FL, E BLDG, Sogood Science Park, Hangkong Road, Xixiang, Bao'an, Shenzhen, China 518102, Phone/Fax: +086-0755-29921615 Email: info@huaptec.com
	Product Model No

Mechanical Parameters

I/O Port	N-Female
Dimensions	220*220*60 mm
Weight	≤ 3.0 kg
Mounting	Wall Mounting

Environmental Parameters

Operating Temperature	(-)25 °C~+55 °C
Storage Temperature	(-)40°C to +85°C
Relative Humidity	5% - 95%
Environment Conditions	IP40

Monitoring Parameters

Local Monitoring	PC via USB Port
Remote Monitoring	Via SMS or GPRS Modem

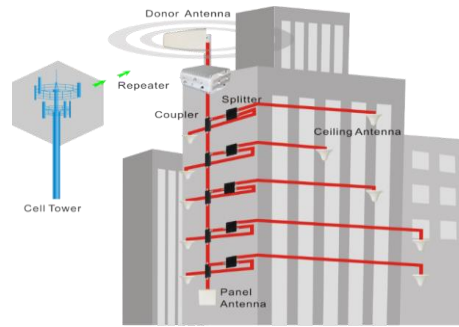
Alarm and Indiction

Power Indicator	Power LED
Alarm Indicator	Alarm LED
Alarm Items	Signal Level, Alarm, ISO Alarm , ALC Alarm , etc.
Repeater Restart Function	Yes

Internal Battery

The system is incorporated with internal rechargeable battery capable of sending SMS when AC power not available

Installation Example



Huaptec Telecom GmbH

Phone: (44)20 3239 5808

Address: Benno-Strauß-Street 7, 90763 Fürth, Germany

Email: sales@huaptec.eu

Huaptec US Inc.

Phone: (972) 870-5666

Address: 6210 N Belt Line Rd., Ste. 110, Irving, TX 75063

Email: info@huaptecus.com

Huaptec Telecom India Private Limited

Address: No 57/2, Ground Floor, 8th Main, 2nd Stage J.C. Industrial Estate, Yelachenahalli, Kanakapura Main Road Bengaluru, Phone: +91-80-45973000 &